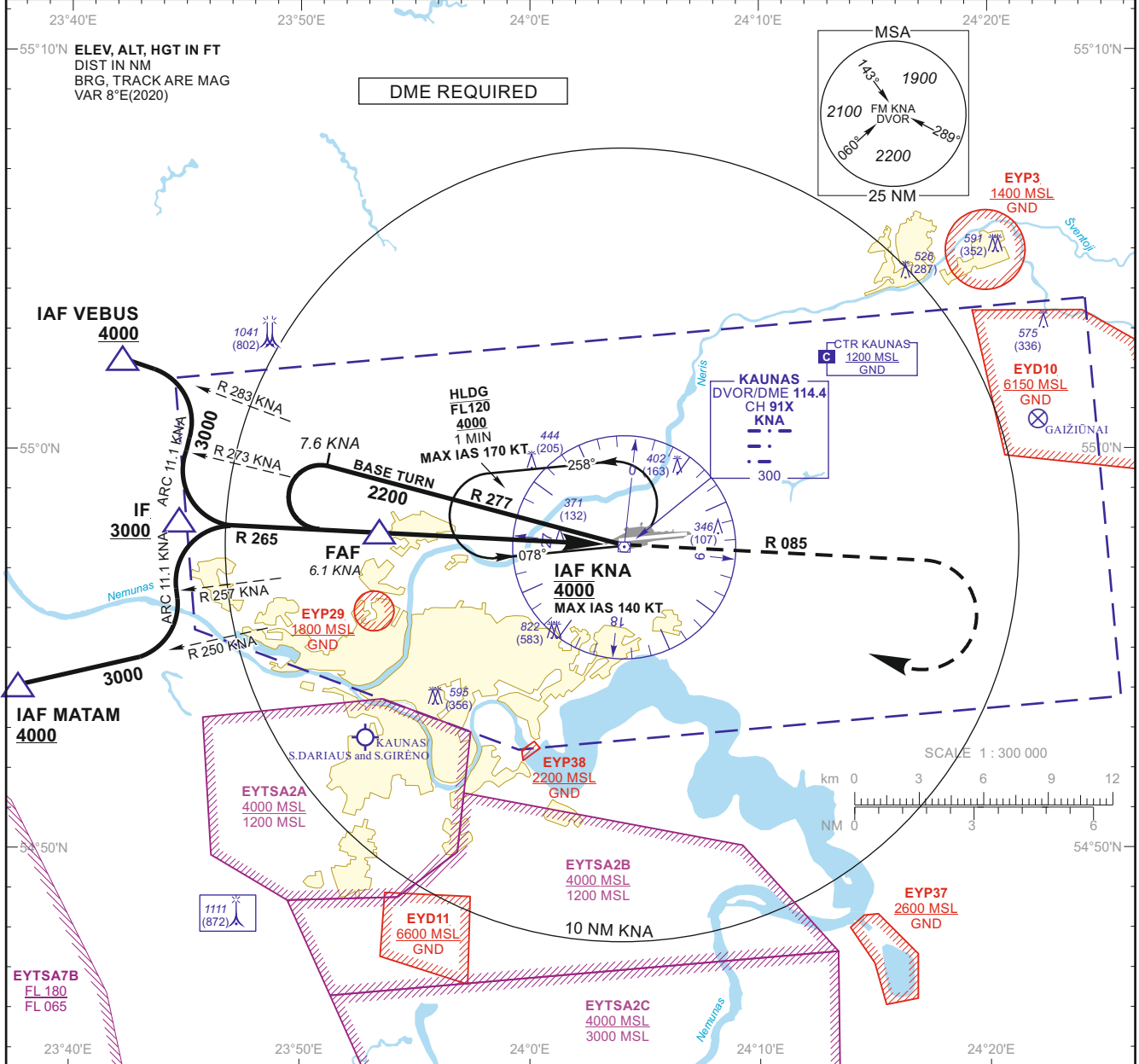
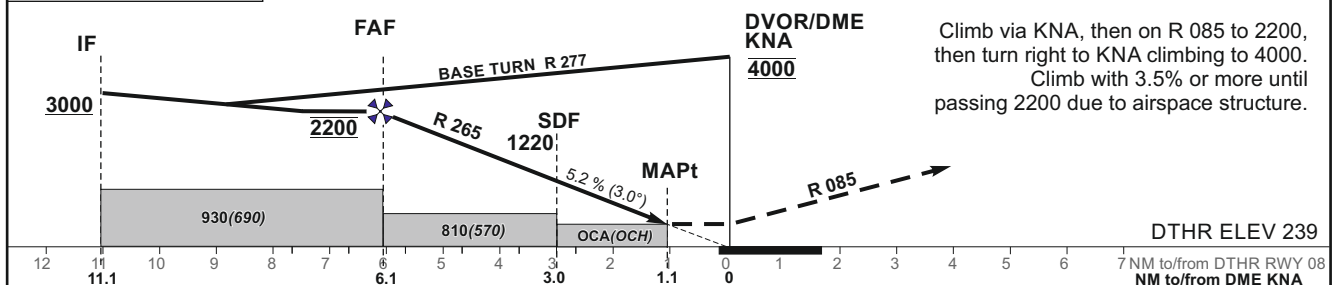


INSTRUMENT  
APPROACH  
CHART - ICAOAERODROME ELEV 259  
HEIGHTS RELATED TO  
DTHR RWY 08 - ELEV 239TWR 124.205  
118.505  
ATIS 129.055KAUNAS  
VOR Z RWY 08  
(CAT A/B)

TRANSITION ALT 5000

MISSED APPROACH



OCA(OCH)		A	B	DIST DME KNA	5	4	3	2			
STRAIGHT-IN APPROACH	VOR	780 (540)		Altitude	1850	1530	1220	900			
	VOR (when SDF not recieved)	810 (570)		Height	(1611)	(1291)	(981)	(661)			
CIRCLING		710 (450)	760 (500)	Timing not authorized for defining the MAPt							
				GS	Kts	80	100	120	140	160	180
				FAF - MAPt 5.0 NM	min:sec	3:45	3:00	2:30	2:09	1:53	1:40
				Rate of descent (5.2%)	ft/min	415	520	625	730	835	940
				For data tabulation see verso							

24 FEB 2022

©2019 ORO NAVIGACIJA

AIRAC AMDT 001/2022

Changes: EYP37 and EYP38 added; speed on IAF MATAM and VEBUS withdrawn.

INSTRUMENT  
APPROACH  
CHART - ICAO

**AERODROME ELEV 259**  
HEIGHTS RELATED TO  
DTHR RWY 08 - ELEV 239

TWR	124.205
	118.505
ATIS	129.055

**KAUNAS**  
**VOR Z RWY 08**  
**(CAT A/B)**

# TABULAR DESCRIPTION

## VOR INSTRUMENT APPROACH from IAFs(KNA, MATAM, VEBUS)

FIX/POINTS	COORDINATES	FIX FORMATION
MATAM (IAF)	54 54 08.9N 023 37 22.7E	BRG 069.87° / 15.74 NM KNA
VEBUS (IAF)	55 02 19.2N 023 42 11.7E	BRG 103.17° / 13.40 NM KNA
KNA (IAF)	54 57 37.4N 024 03 59.1E	
IF	54 58 10.8N 023 44 41.9E	BRG 085.47° / 11.13 NM KNA
FAF	54 57 56.2N 023 53 22.0E	BRG 085.47° / 6.13 NM KNA
SDF	54 57 46.7N 023 58 47.8E	BRG 085.47° / 3.00 NM KNA
MAPt	54 57 41.0N 024 02 00.9E	BRG 085.47° / 1.14 NM KNA
DTHR RWY 08	54 57 46.44N 024 03 50.94E	

Final approach descent angle: 3.00°

Changes: new chart.